

THESE DRAWINGS AND SPECIFICATIONS ARE THE PROPERTY OF JBL. INCORPORATED. THEY ARE ISSUED IN STRICT CONFIDENCE AND SHALL NOT BE REPRODUCED OR USED AS THE BASIS FOR MANUFACTURE OR APPARATUS WITHOUT WRITTEN PERMISSION.

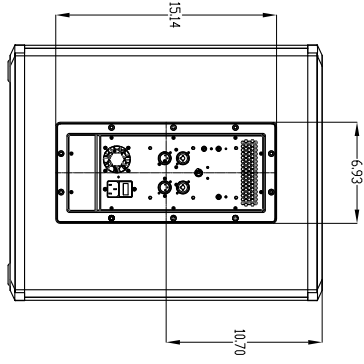
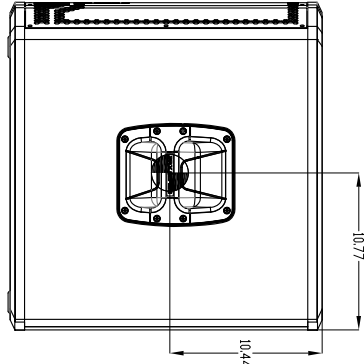
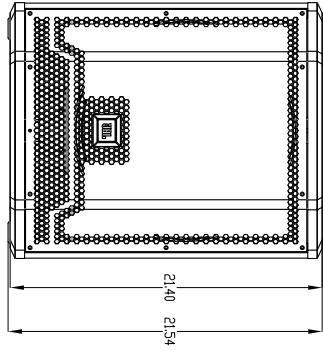
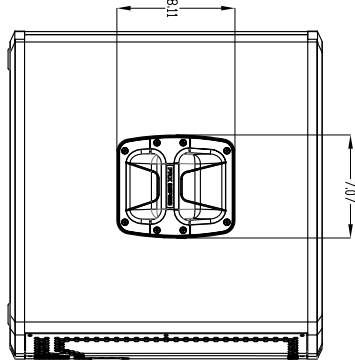
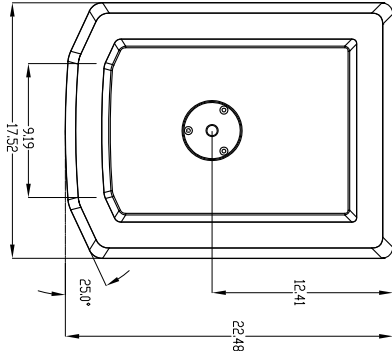
4

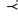
3

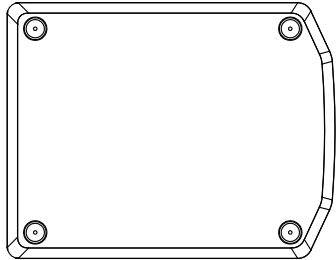
2

1

REVISIONS			
LTNR	DESCRIPTION	DEPT	DATE
A	RELEASE TO MARKETING	JS	3/20/2014



- NOTES:
1. COMPONENTS: LF 1X 275G
  2. INPUT 2X XLR WITH LOOP THRU
  3. GRILLE: 16 GA. PERFORATED CRS. POWDER COATED BLACK WITH CLOTH BACKING
  4. MATERIALS: 18mm BIRCH FACED POPLAR
  5. FINISH: BLACK DURA-LEX
  6. SUSPENSION POINTS: 12X M10 THREADED SUSPENSION POINTS
  7. PILE MOUNT: DUAL 35mm Q-3/8" FEMALE SOCKET WITH 0 AND 15 DEGREE AIMING ANGLES.
  8. WEIGHT: 30 LBS (20 kg)
  9.  INDICATES CENTER OF GRAVITY



# TOLERANCES

(UNLESS OTHERWISE SPECIFIED)

XX ± .063 INCH

XX ± .125 INCH

ANGULAR TOLERANCE: ± 0°30'

FRACTIONAL DIMENSIONS: ± 1/32

ALL DIMENSIONS ARE IN INCHES

DO NOT SCALE DRAWING



JBL PROFESSIONAL  
A Harman International Company  
Northridge, California 91329 U.S.A.

CUSTOMER DRAWING: PRX715XLP

SIZE: A  
DRAWING NO: 1000135289  
REV: A

SCALE: NTS  
SHEET: 1 OF 1